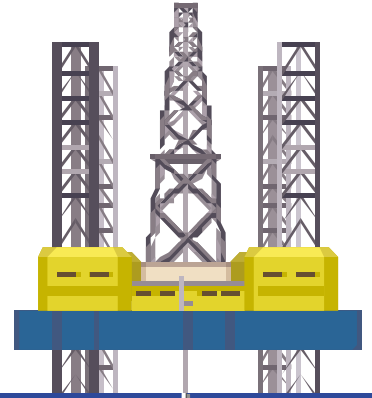
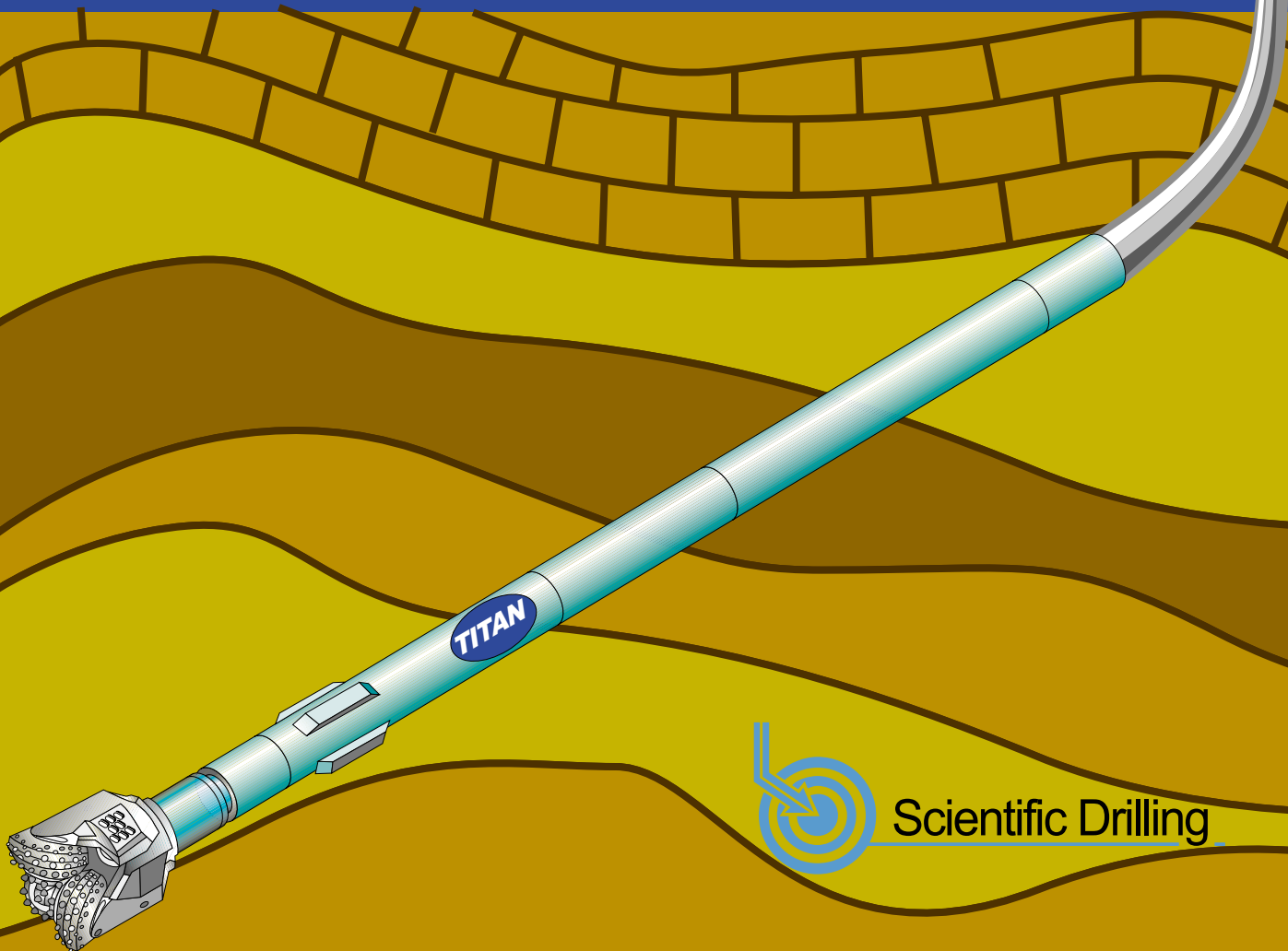


High Performance Mud Motor



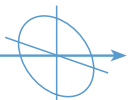
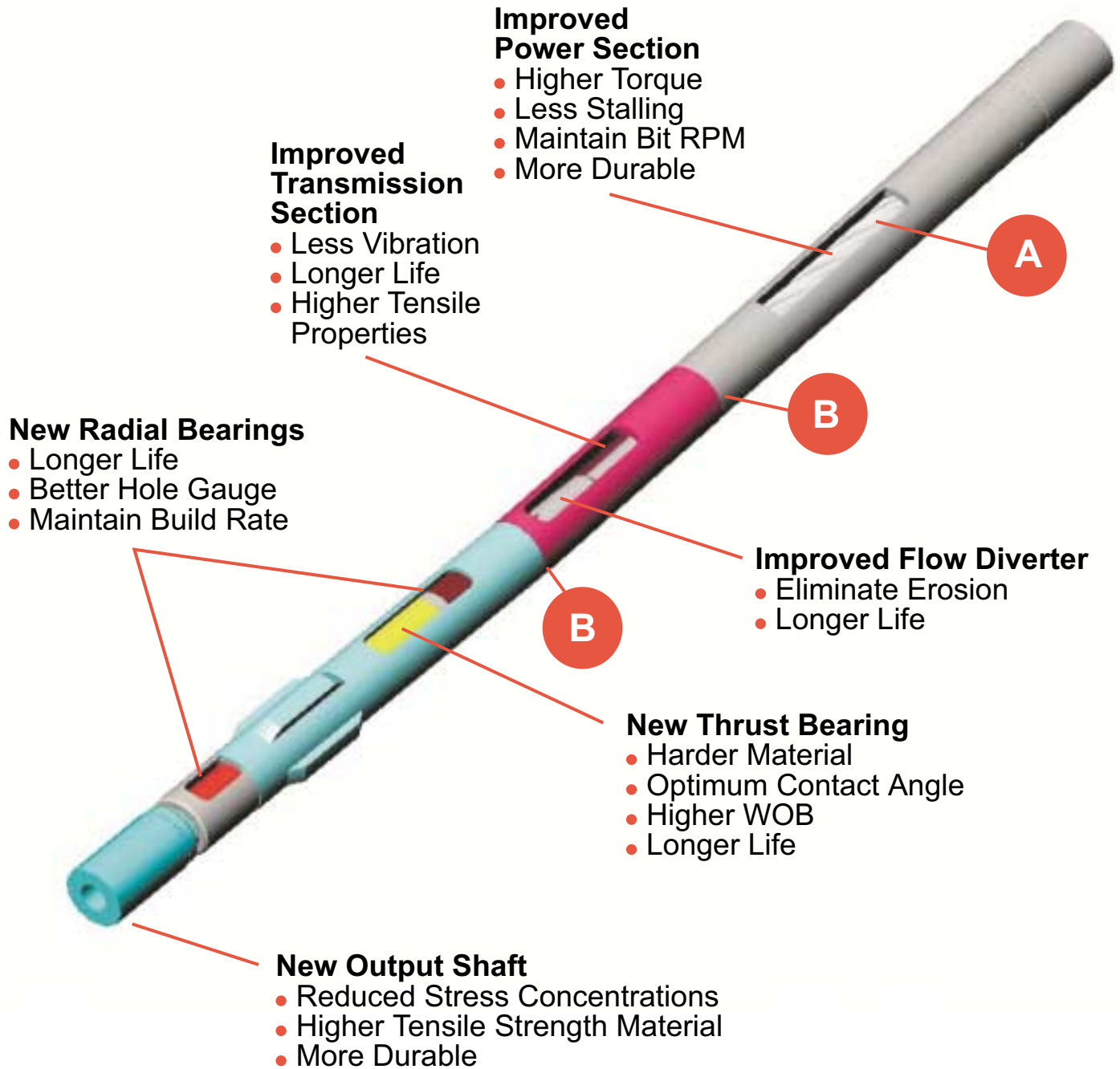
Improved Drilling Performance through:

- * Higher Torque for less stalling and improved ROP
- * Higher RPM for better hole cleaning
- * Higher Temperature Limits
- * Higher Weight on Bit



Scientific Drilling

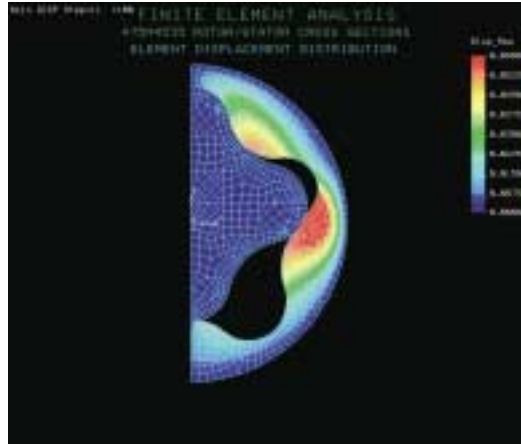
TITAN High Performance Mud Motor



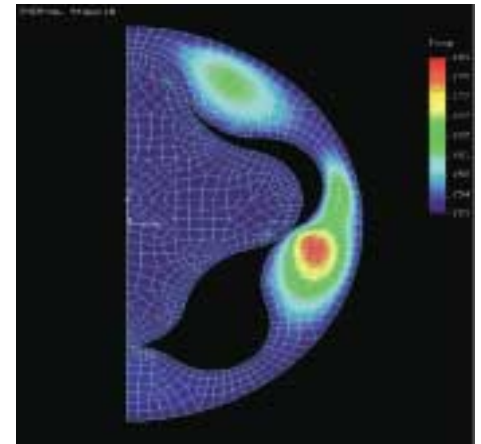
FEA's of STATOR

A

- 1 This view illustrates the temperature effects using different rotor/stator compression effects.
- 2 This view shows the temperature effects under load while incorporating downhole temperature.



1

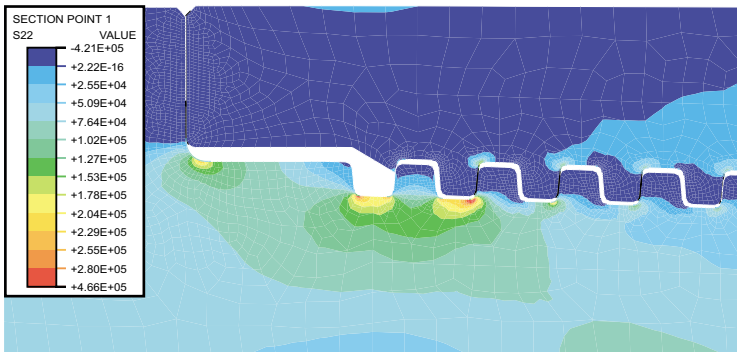


2

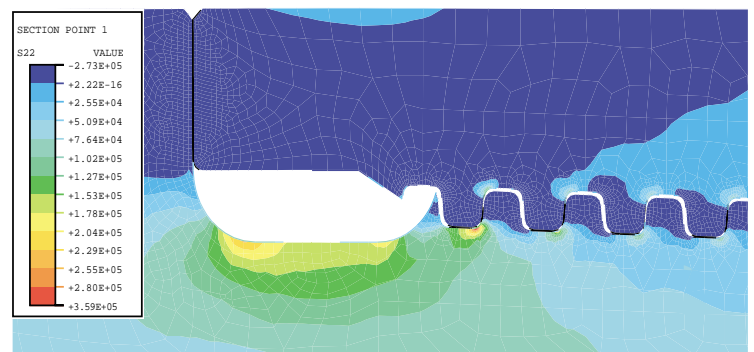
B

FEA's of STRESS RELIEF GROOVE

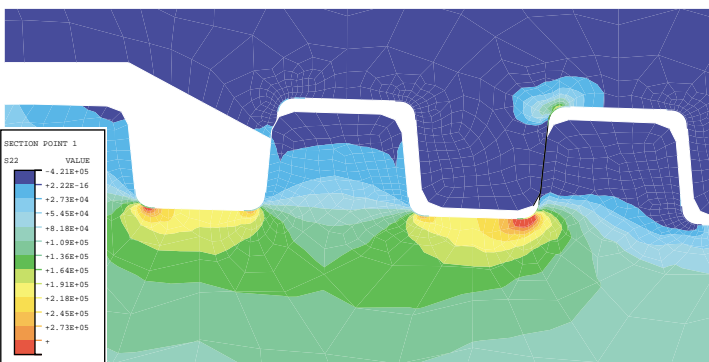
Outer Housing connection without Stress Relief Groove



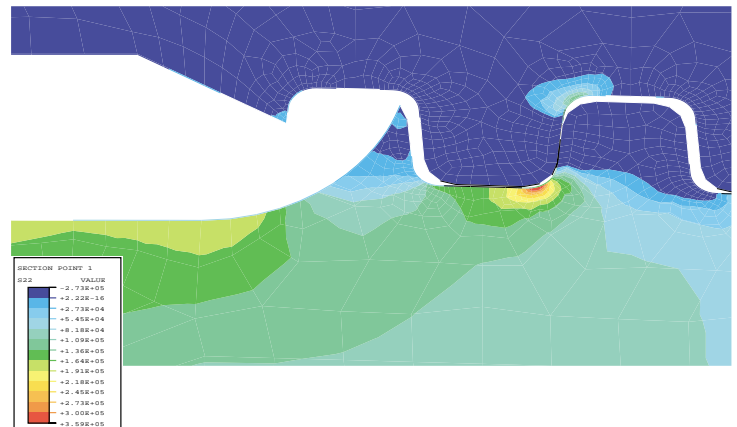
Outer Housing connection with Stress Relief Groove



Close up without Stress Relief Groove



Close up with Stress Relief Groove



Connections are under the same load.
 The FEA model shows stress has been reduced by a factor of 3.
 Bench test shows life has been increased by as much as 6 times.

SDI has used Robbins&Myers as it's power section provider for the past 15 years. This has allowed us to build a strong relationship between our companies that has helped SDI to provide the latest technologies to our clients. Our strong communication links help SDI to adapt to new drilling conditions almost instantaneously. R&M is the world leader in Power Section Technology.



Worldwide Headquarters

1100 Rankin Road
Houston, TX 77073
(281) 443-3300
(281) 443-3311(fax)
Web Site: www.scientificdrilling.com

Applied Technologies Assoc.

3025 Buena Vista Drive
Paso Robles, CA 93446
(805) 239-9100
(805) 239-9101 (fax)
Web Site: www.ata-sd.com

ATA Corporate

2450 Mission Street
San Marino, CA 91108
(626) 441-3111
(626) 441-0142 (fax)

North America

Bakersfield, CA 93313
4516 District Blvd.
Tel : (661) 831-0636
Fax: (661) 831-4693

Casper, WY 82604
7237 West Barton Road
P.O. Box 1600
Mills, WY 82644
Tel : (307) 472-6621
Fax: (307) 472-5439

Denver, CO 80202
1600 Broadway, Suite 2400
Tel : (303) 892-8800
Fax: (303) 892-1202

Houston, TX 77073
1100 Rankin Road
Tel : (281) 443-4600
Fax: (281) 443-4670

Lafayette, LA 70507
Highway 723, Box 500
P.O. Box 1158
Scott, LA 70583
Tel : (337) 232-7302
Fax: (337) 235-6828

Laurel, MS
Tel : (601) 649-0100
Fax: (601) 649-0109

Midland, TX 79703
2034 Trade Drive
P.O. Box 9699, 79708
Tel : (915) 563-1339
Fax: (915) 697-0324

New Orleans, LA 70112
1515 Poydras Street
Suite 2300
Tel : (504) 522-3598
Fax: (504) 522-3603

Oklahoma City, OK 73128
421 South Eagle Lane
Tel : (405) 787-3663
Fax: (405) 787-8732

Canada
2615 22nd Street N.E.
Calgary, Alberta T2E 7L9
Tel : (403) 250-3277
Fax: (403) 250-3312

St. John's Newfoundland
H.I.W.S.
Halifax, Nova Scotia
SOEI

Europe/Middle East

Scotland
North Sea Headquarters
Wellheads Crescent
Dyce Industrial Park
Dyce, Aberdeen AB21 7GA
Tel: 44 1224 724535
Fax: 44 1224 770581
(district)
Fax: 44 1224 796400
(division)

England
Unit 1, Bessemer Way
Harfreys Industrial Estate
Great Yarmouth NR31 OLX
Tel : 44 1493 603611
Fax: 44 1493 653178

United Arab Emirates
Dubai
P.O. Box 26725
Dubai
Tel : 9714 3243266
Fax: 9714 3243711

United Arab Emirates
Abu-Dhabi
P.O. Box 46112
Abu Dhabi
Tel : 971 2 6712455
Fax: 971 2 6715497
Mobile : 971 50 6524230

Qatar
P.O. Box 22356
Industrial Area, Street No.5,
Gate No. 57
Doha
Tel: 974 4603599
Fax: 974 4603047

Oman
P.O. Box 889
Muscat
Postal Code 113
Sultanate of Oman
Tel : 968 605 655 Ext 330
Fax: 968 601 848
Direct: 968 601 471

Netherlands
Robbenkoog 42
Beverkoog Ind. Estate
Postbus 8102
1802 KC Alkmaar
Tel : 31 72 5642480
Fax: 31 72 5641135

Norway
Kokstadveien 40B
5257 Kokstad
Bergen
Tel : 47 55 982 100
Fax: 47 55 982 101

Norway
Vassbotnen 15
Forus Atrium
4300 Sandnes
Stavanger
Tel : 47 51 678 591
Fax: 47 51 678 401

Saudi
Mobile: 966 53841524

Asia Pacific

Japan
G.E.R.D.
Kyodo Building
11-7 Kabuto-cho
Nihonbashi, Chuo-ku
Tokyo 103-0026
Tel : (81-3) 3666-5822
Fax: (81-3) 3666-5289

Philippines
DESCO Compound
Villonco Road
Km. 21 S. S. Highway,
Sucat
Muntinlupa, Metro Manila
(63-2) 8420105, 8420424
Fax: (63-2) 8420105,
8090055

Thailand
218 Paholyothin 24
Paholyothin Rd,
Kwaeng Lardyao
Khet Jatuchak
Bangkok 10900, Thailand
Tel : (66-2) 5115344, 5345
Fax: (66-2) 5115346

Australia
47-49 Caserta Dr.
Berwick, Victoria 3806
(61-39) 769-9778
Fax: (61-39) 769 9483
Mobile : (61) 419191719

